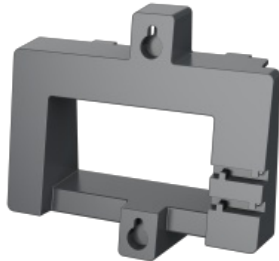


1490009004

Wall-Mount Bracket for ITSV-2



DESCRIPTION

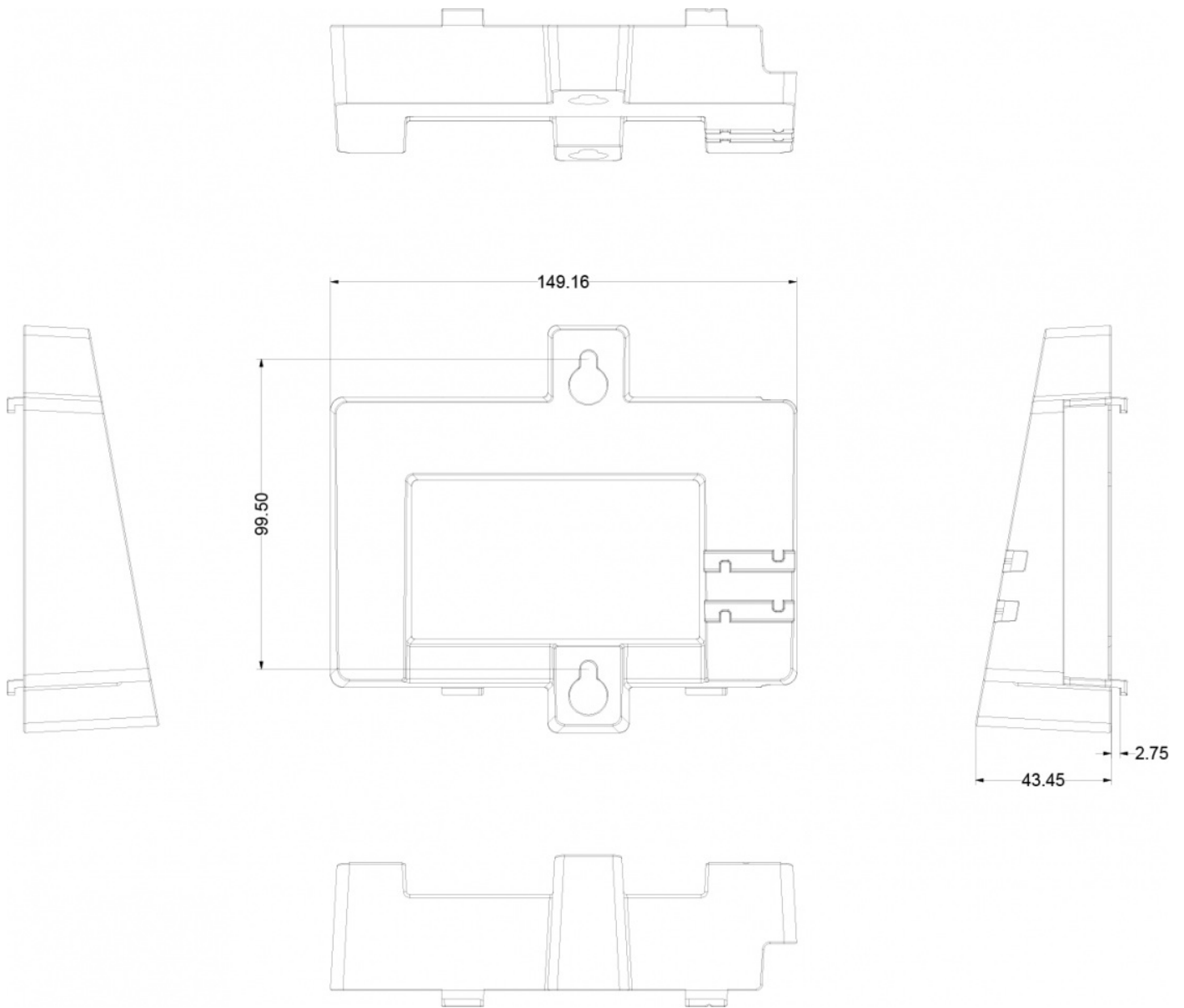
Used for wall mounting of the ITSV-2 Video Station.

SPECIFICATIONS

GENERAL

Dimensions (WxHxD)	149.16 x 99.5 x 43.45 mm
--------------------	--------------------------

TECHNICAL DIMENSIONS



USED WITH



1490002010

ITSV-2

Powerful Desktop Video Phone with 5" capacitive touch screen and support for 720p HD video.